



GAT MONTHLY MEMBERSHIP PROGRESS REPORT

Results as of: 5/31/2023

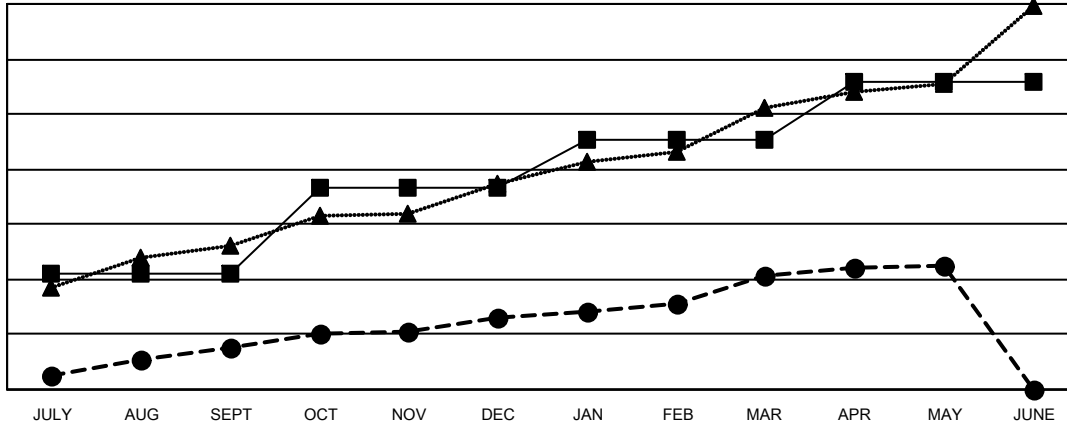
Multiple District 321

LOCATION: INDIA

Clubs			
RESULTS FOR 2022-2023			
QUARTER	NEW CLUB GOAL	NEW CLUBS	DROPPED CLUBS
JULY/AUG/SEPT	42	15	8
OCT/NOV/DEC	31	11	36
JAN/FEB/MAR	18	15	13
APR/MAY/JUNE	21	4	0

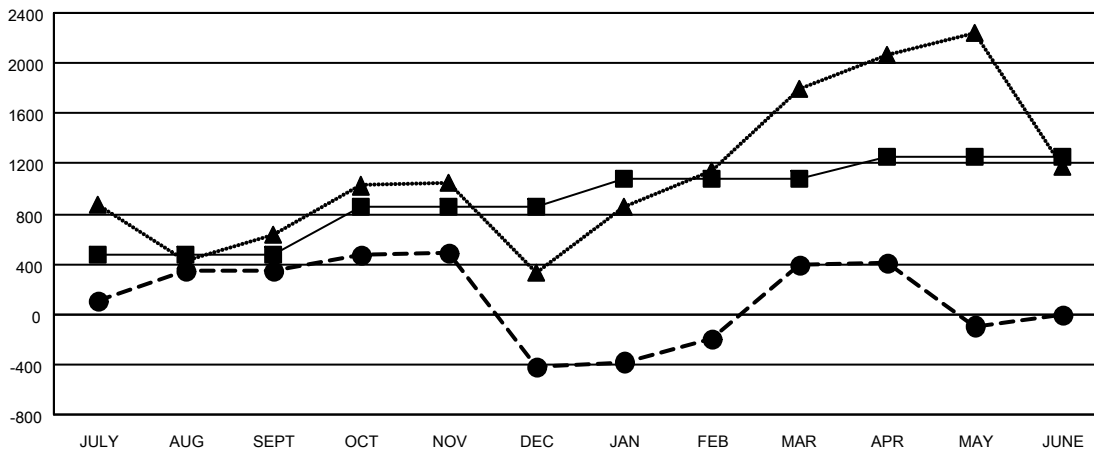
Members			
RESULTS FOR 2022-2023			
QUARTER	MEMBER GROWTH NET GOAL	MEMBER GROWTH ACTUAL	DROPPED MEMBERS ACTUAL (including transfers)
JULY/AUG/SEPT	480	1,337	845
OCT/NOV/DEC	370	938	1,647
JAN/FEB/MAR	235	1,690	630
APR/MAY/JUNE	165	557	962

GOALS AND ACTUAL NEW CLUBS CUMULATIVE



- CURRENT YEAR GOALS FOR NEW CLUBS
- CURRENT YEAR ACTUAL NEW CLUBS
- ▲- LAST YEAR ACTUAL NEW CLUBS

GOALS AND ACTUAL MEMBERS CUMULATIVE



- MEMBER GROWTH NET GOAL
- MEMBER GROWTH ACTUAL
- ▲- LAST YEAR MEMBERSHIP ACTUAL

DROPPED CLUBS: 57	618 CLUBS OF 1175 ADDED 1 OR MORE NEW MEMBERS	GENDER DISTRIBUTION
DROPPED MEMBERS	CLICK HERE FOR CUMULATIVE MEMBERSHIP DATA	MALE 22,206 (67.80%)
DECEASED 79		FEMALE 10,533 (32.16%)
CLUB CANCELLED 782		NON BINARY 0 (0.00%)
OTHER 3,223		PREFER NOT TO ANSWER 13 (0.04%)
TOTAL 4,084		TOTAL FAMILY UNIT MEMBERS 19,900
		FAMILY MEMBERS PAYING HALF DUES 12,212